

soilmate™ AMPLIFY



Soil Mate Wild Harvested Seaweed (WHS) Fertiliser & Bio-Stimulant 0.5-3.5-1.1 + 21.2% Organic Carbon

Soil Mate Amplify contains all the benefits of Soil Mate Elevate Seaweed Concentrate and is fortified with 21% Organic Carbon to act as a powerful biostimulant. When used in conjunction with Soil Mate Revival, the organic carbon feeds and stimulates the added Bacillus bacteria, as well as stimulating growth for the rest of the soil microbes.

Important Plant Hormones in Soil Mate Wild Harvested Liquid Seaweed Fertiliser

Liquid Seaweed Fertilisers are hormones. Seaweed contains four primary hormone types: auxins, cytokinins, betaines and gibberellins. These hormones, although only required in very small proportions, are essential to plant health and vitality.

+ Auxins

There are many different auxins, and they all have a specific role. The primary function of auxins is to balance the plants speed of growth. They have both growth-stimulating and growth-delaying functions. They also stimulate root growth and prevent bud forming or bud opening at the wrong times. Seaweed plays an important role in the plant's own auxins production as the hormones form with the help of trace elements from the liquid seaweed fertiliser.

+ Cytokinins

Cytokinins are another group of essential plant hormones. They initiate and activate basic growth processes. Cytokinins available in liquid seaweed stimulates growth with greater vigor because they mobilize nutrients in the leaves. They also provide protection from marginal frost (up to -3 Celsius). Cytokinins also control the senescence, loss of a cell's power of division and growth (aging processes) in the plant.

+ Betaines

Betaines play an essential role in the osmotic processes in plants. They help to increase the water uptake in plants and are extremely helpful in dry conditions. Betaines are also particularly helpful to plants undergoing stress.

+ Organic Carbon

Organic Carbon is the basis of soil fertility and is a powerful food source and stimulation for biological growth and reproduction.

- Acts as a powerful bio-stimulant to accelerate biological growth
- Improve fertiliser efficiency
- Increase cation exchange capacity
- Increase penetration and retention of calcium in the soil
- Reduce leaching and increase soil fertility
- Increase water holding capacity
- Improve soil structure for the long term
- Decrease plant stress

- Increase root growth
- Improves profitability through yield increases

Total Major Nutrients:	Unit
Nitrogen (N)	% 0.481
Phosphorus (P)	% 3.52
Potassium (K)	% 1.1
Sulphur (S)	% 0.06
Total Cations:	
Calcium (Ca)	% 0.0375
Magnesium (Mg)	% 0.0244
Sodium (Na)	% 0.474
Total Minerals:	
Copper (Cu)	ppm 3.32
Zinc (Zn)	ppm 8.64
Iron (Fe)	ppm 3.33
Manganese (Mn)	ppm 1.8
Cobalt (Co)	ppm 0.12
Molybdenum (Mo)	ppm 0.242
Boron (B)	ppm 24.8
Carbon Content:	
Organic Matter	% 25.3
Organic Carbon	% 21.2
Carbon/Nitrogen Ratio	C/N 21.62
pH (1:5 Water)	7.03

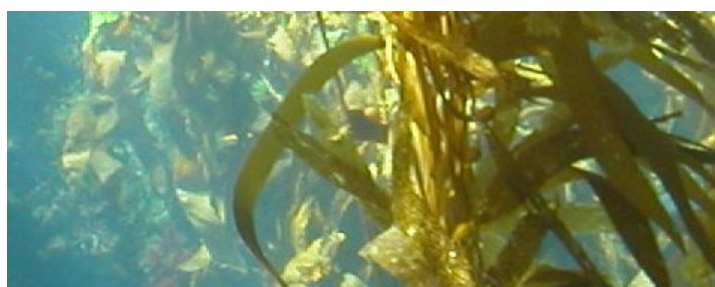
Application Rates

Soil Mate WHS can be applied through all farming equipment including boom sprays, pivots, knapsack sprayers etc.

For all types of spray equipment, use the area normally covered by one tankful to determine how much product to add.

4L/Ha application rate on all crop types.

Remember to shake very well prior to application.



Our Wild Harvested Seaweed and Abalone Fertilisers are sustainably sourced from Victoria waters. Our Full range of Organic Fertilisers are proudly Australian Made & Owned.